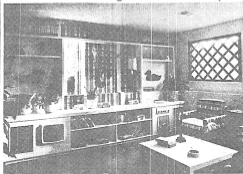




Summit Homes designs can be developed



NEW PHOTO BY MEL SCHWELTZ

The Summit Homes by Madison Villa are priced in the middle \$50,000 range when stripped of trim.

There are two ranch designs and a split level. The Cottageswood is offered with 875 square feet of living space spread over a living room, a dining area and kitchen with two bedrooms and bath.

The basement has development possibilities options.

The overall basic price is \$55,000 and it includes in addition to the above mentioned a full two car garage, carpeting and whirlpool range and oven. Everything else — from masonry exterior to fireplace — is optional equipment and adds to the price of the home.

The Wilson is a three bedroom ranch with one bath. There is a living room, a dining room and small kitchen.

It is possible to add a second bathroom by eliminating a walk in closet in the master bedroom for an additional \$1,800. The third bedroom can be a den option.

(Continued on page 80)



one like this low kitchen, all-ench rustic style w/ front Reeds. Large close its. 2-car. finished stoves include up microwave oven, ridors, covered the east study or private bath and a, energy-saving ed Cherry Creek ing distance. Day 3,600

no serves community.

Wicki Realty
207 South 44th Street
Wichita, KS 67212
405-733-1111
Equal Housing Opportunity



CHIRE



WHAT ARE YOU WAITING FOR?

The last 15 homes
at Madison Hill are now
available with Per-Mack's